



sunExt

LATICCES

CATALOG

ENG



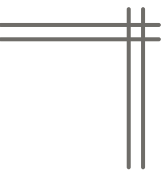
Privacy



Estetic



**perfect
to
custom**



Index

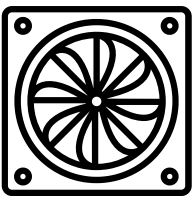
Introduction	01
Slats model	02
Dismensions	03
Extrusion profiles Manual lattice 120	04
Accesories Manual lattice 120	05
Extrusion profiles Manual lattice 210	06
Accesories Manual lattice 210	07
Extrusion profiles Motorized lattice 120	08
Accesories Motorized lattice 120	09
Extrusion profiles Motorized lattice 210	10
Accesories Motorized lattice 210	11
Treatments and finishes	12





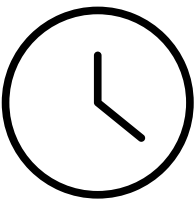
Introduction

EXPALUM Lattices are innovative, very effective, safe and aesthetic construction solution for wall and front of building coverings in homes, premises, offices, industries or hotels.



Ventilation allows air circulation while keeping the room protected from the sun, a very notable aspect for the hot summer months.

Privacy, regulating the position and inclination of the slats allows you to maintain the privacy of the rooms without giving up ventilation and sunlight entry.



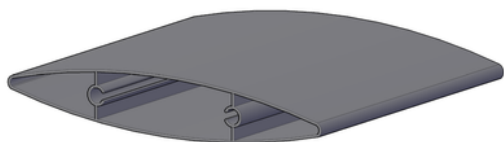
Aesthetics and durability, it adapts to the needs of all users since we have a wide range of slat models and colors.

Energy savings, causes greater thermal comfort inside, reducing heating needs and helping to save energy.

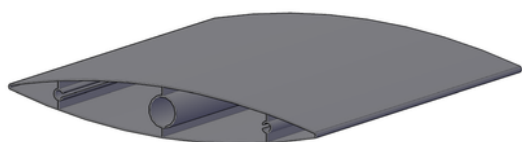


Slats model

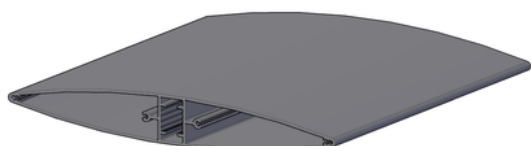
CE006 - 19619 - LATTICE
MODEL SQ02 120 MM (K)



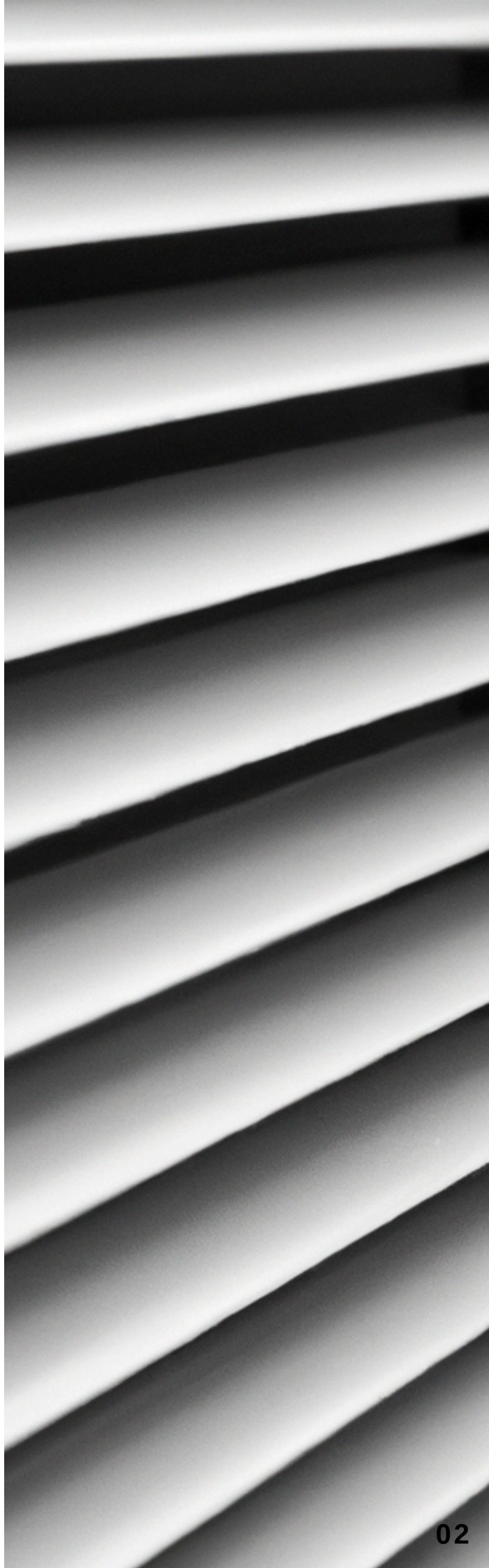
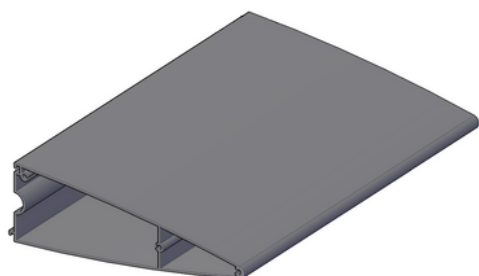
CE007 - 19620 - LATTICE
MODEL SQ01 210 MM (K)



CE018 - 19620 - LATTICE
MODEL SQ01 210 MM (K)

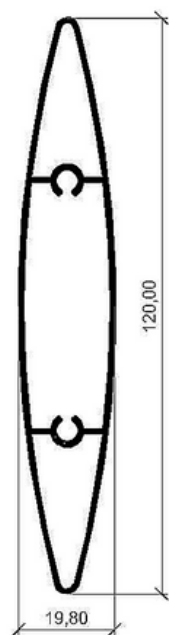


CE019 - LATTICE
MODEL 420MM REF:10026

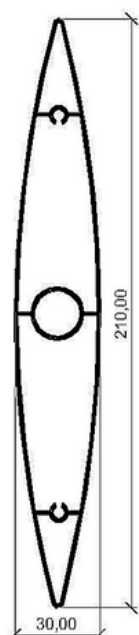


Dimensions

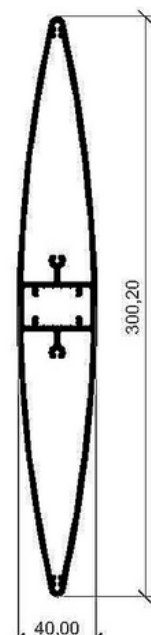
The lattices are available in different dimensions and sections:



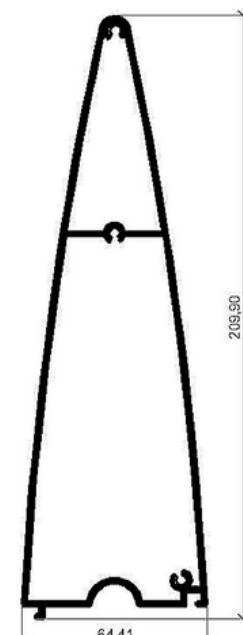
CE006



CE007



CE018



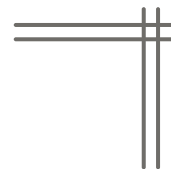
CE019

Maximum installation dimensions for Class 6 (in millimeters)

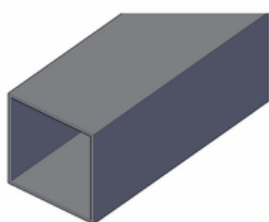
CE006	2300
CE007	3300
CE018	4500
CE019	Variable, depending on project

Extrusion Profiles & Accessories Manual

Lattice 120



PF023 - ALUMINIUM TUBE
40 x 40 x 1.3



AJ0014 - ORIENTATION
ARC LATTICE
REF:107030



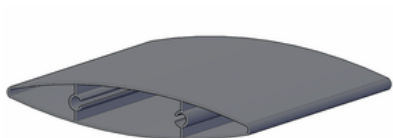
E0111 - 19011 - ANGLE PROFILE
20 X 20 X 1.5



AJ0021 - SLEEVE FRAME 40
LATTICE REF:06008



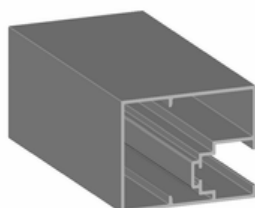
CE006 - 19619 - LATTICE
MODEL SQ02 120 MM (K)



AJ0022 - SLEEVE ENDCAPS
LATTICE 120 REF:06009



CE020 - FRAME LATTICE
40 X 50 REF:10027



CE013 - FASTENER PROFILE
LATTICE REF:2117



Accessories Manual

Lattice 120

AJ0001 - KIT REGULABLE
PLIERS LATTICE SLAT 300
REF:D6072.89



AJ0004 - ALUMINIUM
LATERAL COVER FOR
LATTICE MODEL SQ02
(120) REF:105694



AJ0020 - ALUMINIUM
LATERAL COVER
PERFORATED FOR
LATTICE MODEL SQ02
(120) REF:112136



AJ0007 - SPRING FOR CAP
FOR MOBILE LATTICE



AJ0019 - KNOB MANUAL
LATTICE



AJ0016 - REMOTE CONTROL
FOR SLATS ORIENTATION
INOX 303 Ø-32 X 12
M-5//M-8 LATTICE



PA092 - SCREW FOR
SLAT COVER A2 4.2 X 16



AJ0010 - BOLT AL. 15 X 12
FOR FASTENER PROFILE

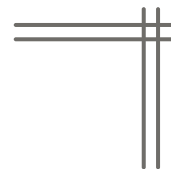


AJ0017 - SCREW A2-070
M5 X 10 MM FOR LATTICE
TRANSMISSION

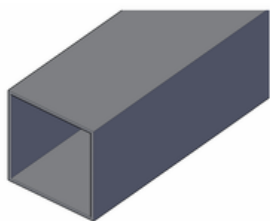


Extrusion Profiles & Accessories Manual

Lattice 210



PF023 - ALUMINIUM TUBE
40 x 40 x 1.3



AJ0014 - ORIENTATION
ARC LATTICE REF:107030



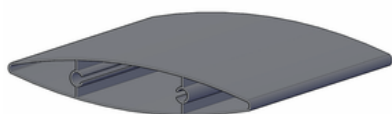
E0111 - 19011 - ANGLE PROFILE
20 X 20 X 1.5



AJ0021 - SLEEVE FRAME 40
LATTICE REF:06008



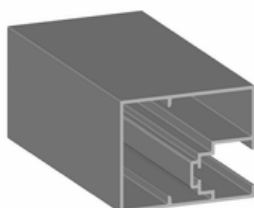
CE007 - 19620 - LATTICE
MODEL SQ01 210 MM (K)



AJ0022 - SLEEVE ENDCAPS
LATTICE 120 REF:06009



CE020 - FRAME LATTICE
40 X 50 REF:10027



CE013 - FASTENER PROFILE
LATTICE REF:2117



Accesories Manual

Lattice 210

AJ0001 - KIT REGULABLE
PLIERS LATTICE SLAT
REF:D6072.89



AJ0003 - ALUMINIUM
LATERAL COVER ALUMINIO
FOR LATTICE SQ01 (210)
REF:105693



AJ0018 - ALUMINIUM
LATERAL COVER
PERFORATED FOR LATTICE
SQ01 (210) REF:109493



AJ0010 - BOLTL AL. 15 X 12
FOR FASTENER PROFILE



AJ0019 - KNOB MANUAL
LATTICE



AJ0016 - REMOTE CONTROL
FOR SLATS ORIENTATION
INOX 303 Ø-32 X 12
M-5//M-8 LATTICE



PA092 - SCREW FOR SLAT
COVER A2 4.2 X 16

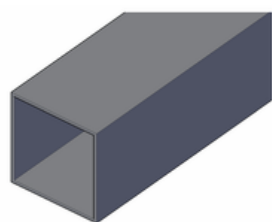


AJ0017 - SCREW A2-070
M5 X 10 MM FOR LATTICE
TRANSMISSION

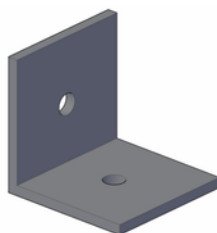


Extrusion Profiles & Accesories of Motorized Lattice 120

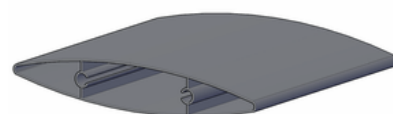
PF026 - ALUMINIUM TUBE
40 X 40 X 1.3



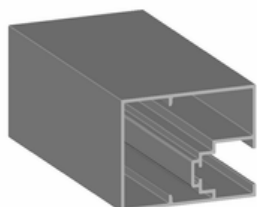
E0111 - 19011 - ANGLE
PROFILE 20 X 20 X 1.5



CE006 - 19619 - SLAT
LATTICE SQ02 120 MM (K)



CE020 - LATTICE FRAME
40 X 50 REF:10027



CE013 - FASTENER
PROFILE LATTICE REF:2117



AJ0017 - SCREW A2-070
M5 X 10 MM FOR LATTICE
TRANSMISSION



CE012 - ALUMINIUM
TRIANGLE FIXATION FOR
LATTICE INIO 4 MM
REF:099731



PA092 - SCREW FOR SLAT
COVER A2 4.2 X 16



PA143 - SCREW FOR SLAT
COVER A2 4.2 X 16



Accessories

Motorized Lattice

120

AJ0001 - KIT REGULABLE
PLIERS LATTICE
REF:D6072.89



AJ0021 - SLEEVE FRAME 40
LATTICE REF:06008



AJ0004 - ALUMINIUM
LATERAL COVER FOR
LATTICE MODEL SQ02 (120)
REF:105694



AJ0022 - SLEEVE ENDCAPS
LATTICE 120 REF:06009



AJ0020 - ALUMINIUM
LATERAL COVER
PERFORATED FOR LATTICE
MODEL SQ02 (120)
REF:112136



AJ0009 - LINEAR ACTUATOR
RIGID PISTON ROD 500N
CAREER 200 FOR LATTICE



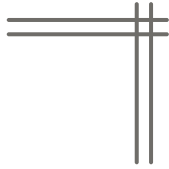
AJ0007 - SPRING FOR CAP
FOR MOBILE LATTICE



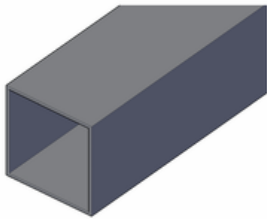
AJ0010 - SCREW A2-070
M5 X 10 MM FOR LATTICE
TRANSMISSION



Extrusion Profiles & Accessories of Motorized Lattice 210



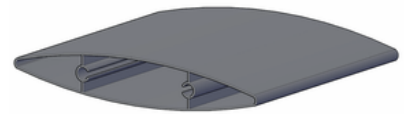
PF026 - ALUMINIUM TUBE
40 X 40 X 1.3



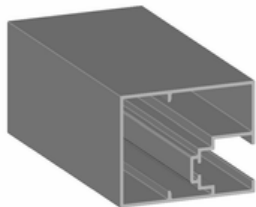
E0111 - 19011 - ANGLE
PROFILE 20 X 20 X 1.5



CE007 - 19620 - LATTICE
SLAT SQ01 210 MM (K)



CE020 - LATTICE FRAME
40 X 50 REF:10027



CE013 - FASTENER
PROFILE LATTICE REF:2117



AJ0017 - SCREW A2-070
M5 X 10 MM FOR LATTICE
TRANSMISSION



CE012 - ALUMINIUM
TRIANGLE FIXATION FOR
LATTICE INIO 4 MM
REF:099731



PA092 - SCREW FOR SLAT
COVER A2 4.2 X 16



PA143 - SCREW FOR SLAT
COVER A2 4.2 X 16



Accessories

Motorized Lattice

210

AJ0001 - KIT REGULABLE
PLIERS LATTICE
REF:D6072.89



AJ0021 - SLEEVE FRAME 40
LATTICE REF:06008



AJ0003 - ALUMINIUM
LATERAL COVER ALUMINIO
FOR LATTICE MODEL SQ01
(210) REF:105693



AJ0009 - LINEAR ACTUATOR
RIGID PISTON ROD 500N
CAREER 200 FOR LATTICE



AJ0018 - ALUMINIUM
LATERAL CAP PERFORATED
FOR LATTICE MODEL SQ01
(210) REF:109493



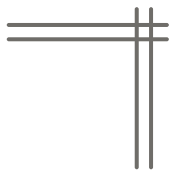
AJ0010 - SCREW A2-070
M5 X 10 MM FOR LATTICE
TRANSMISSION



AJ0007 - SPRING FOR CAP
FOR MOBILE LATTICE



Treatments and finishes



Anodized

After extrusion, the aluminium itself forms a thin film of aluminium oxide that gives it minimal anti-oxidation and anti-corrosion properties. This process improves through anodizing, an electrolytic chemical process that allows artificially obtaining oxide films of much greater thickness and better protection characteristics than natural layers.

Sublimation

Sublimation is a process of transferring an image to the pre-lacquered surface of aluminium, decorating it with a predetermined design.

Lacquer

Lacquering, applied to aluminium profiles, consists of pre-treatment of the surface to be decorated for the subsequent application of powder paint on the surface of the aluminium, which offers high light fastness and resistance to corrosion.

Colors

There is an infinite variety of colors and textures that will allow the user to have total control over each chromatic matrix of the product.



