

**sunExt**

**WIND  
PROTECT  
MOTORIZED  
GUILLOTINE**

**ENG**

**CATALOG**







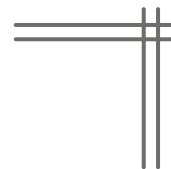
**Panoramic**

**Innovative**



**Modern**

# Index

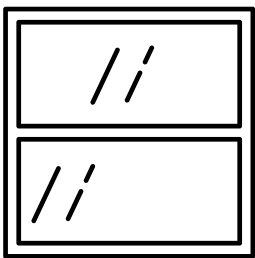


Introduction	01
Cross Section	02
Assembly Topologies & Technical Data	03
Folding	04
Extrusion Profiles	05
Accessories	06
Range of colors available for structure	07



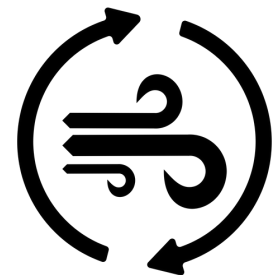
# Introduction

**EXPALUM** Wind Protect system is made up of glazing made with sustainable materials and high-quality aluminum profiles.



**Light and Views,** It has the possibility of being manufactured with two or three glass panels, allowing natural light to flood the interior and providing the space with great panoramic views. This design enhances the aesthetic appeal and creates a bright, inviting atmosphere.

**Ventilation and Flexibility,** The Wind Protect can be folded up vertically to facilitate ventilation when desired. This flexibility ensures that the system can be adjusted to provide optimal comfort and air circulation based on your needs.



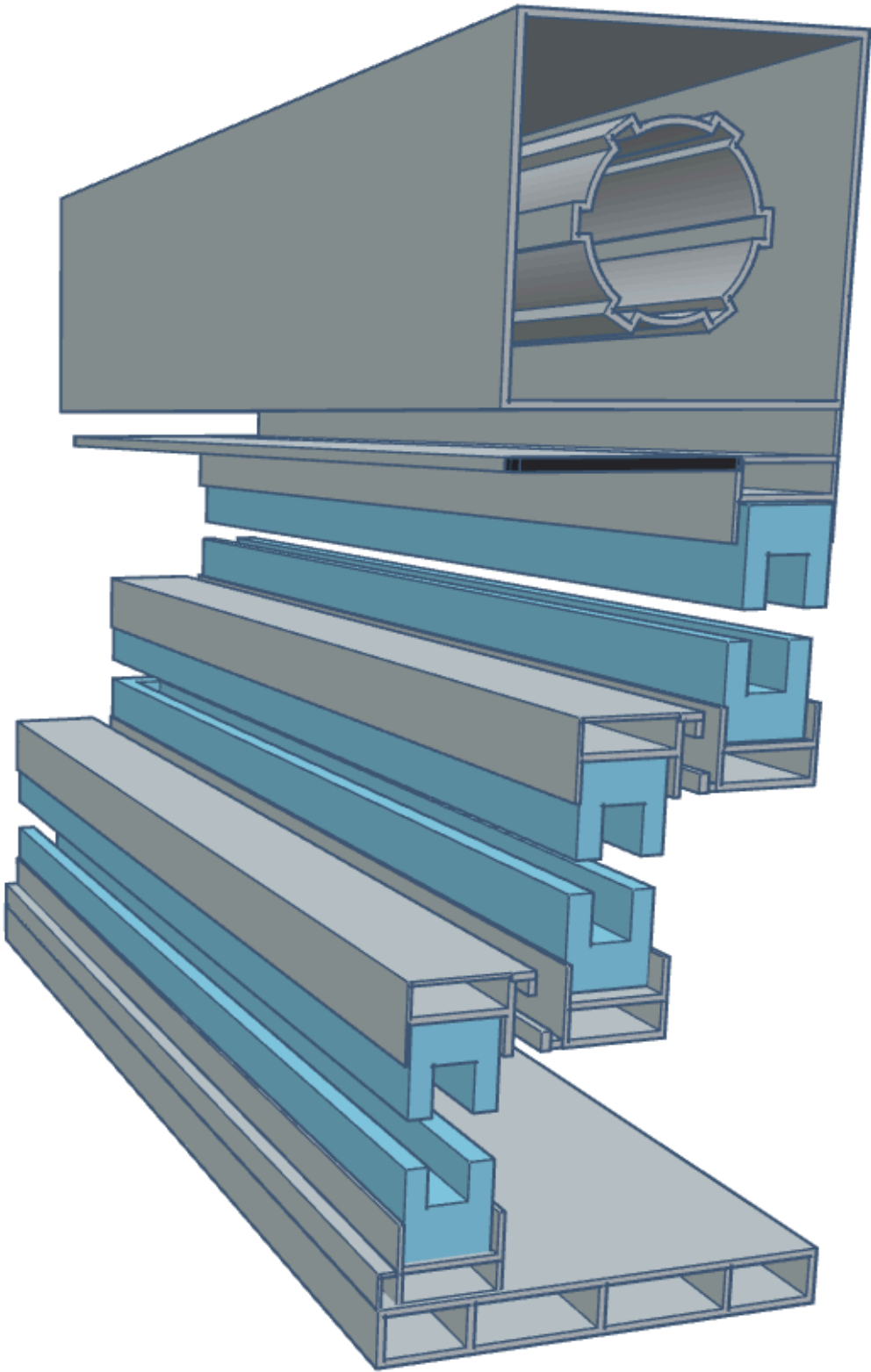
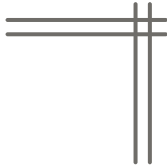
**Customization,** Our system can be customized to fit various architectural styles and personal preferences, making it a versatile choice for different applications.

Whether it's for residential use, hotel facilities, restaurants, or cafes, the system offers tailored solutions to enhance any space.





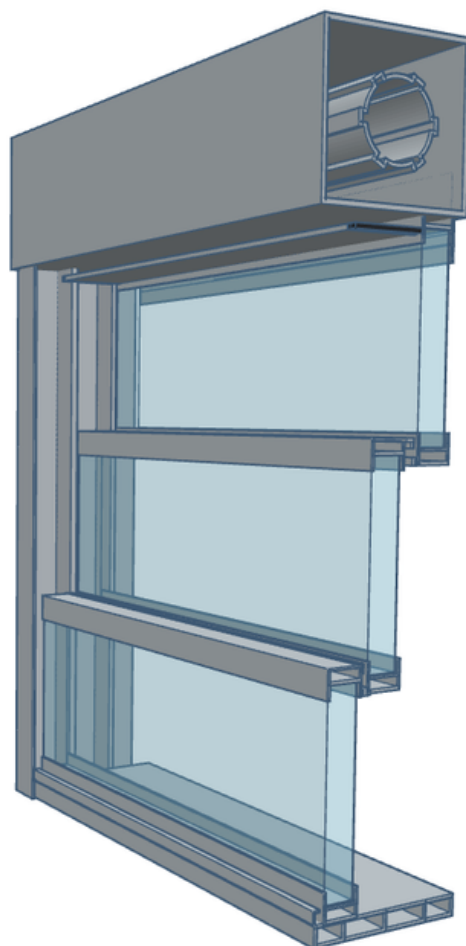
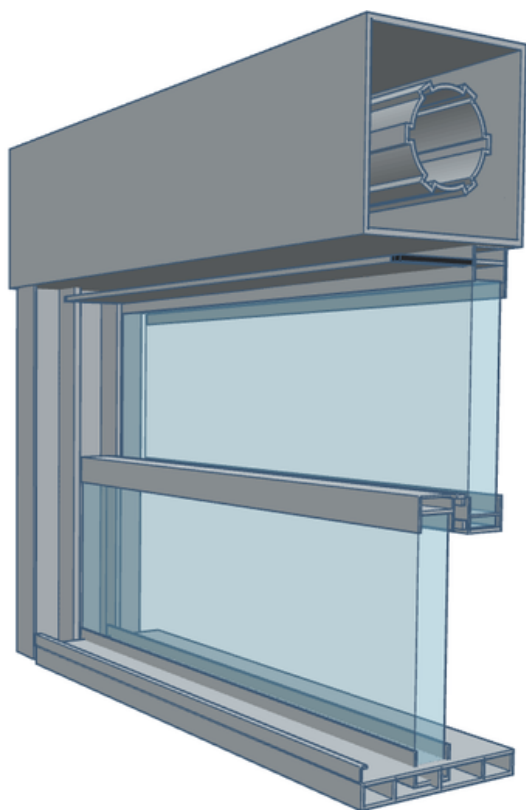
# Cross Section



# Assembly Topologies & Technical Data

2 sheets

3 sheets



## Glass compatibility

Laminated  
Thermally toughened glass  
Double-glazed

## Thickness

4+4 mm  
8 mm  
24mm

## Maximum width

3500x2800



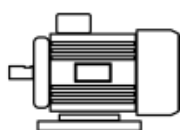
## Airtight



## Luminosity



## Tubular motor



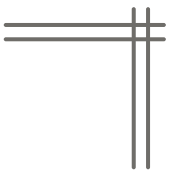
## High Wind resistance

UNE-EN 12211:2017  
2000Pa  
373km/h

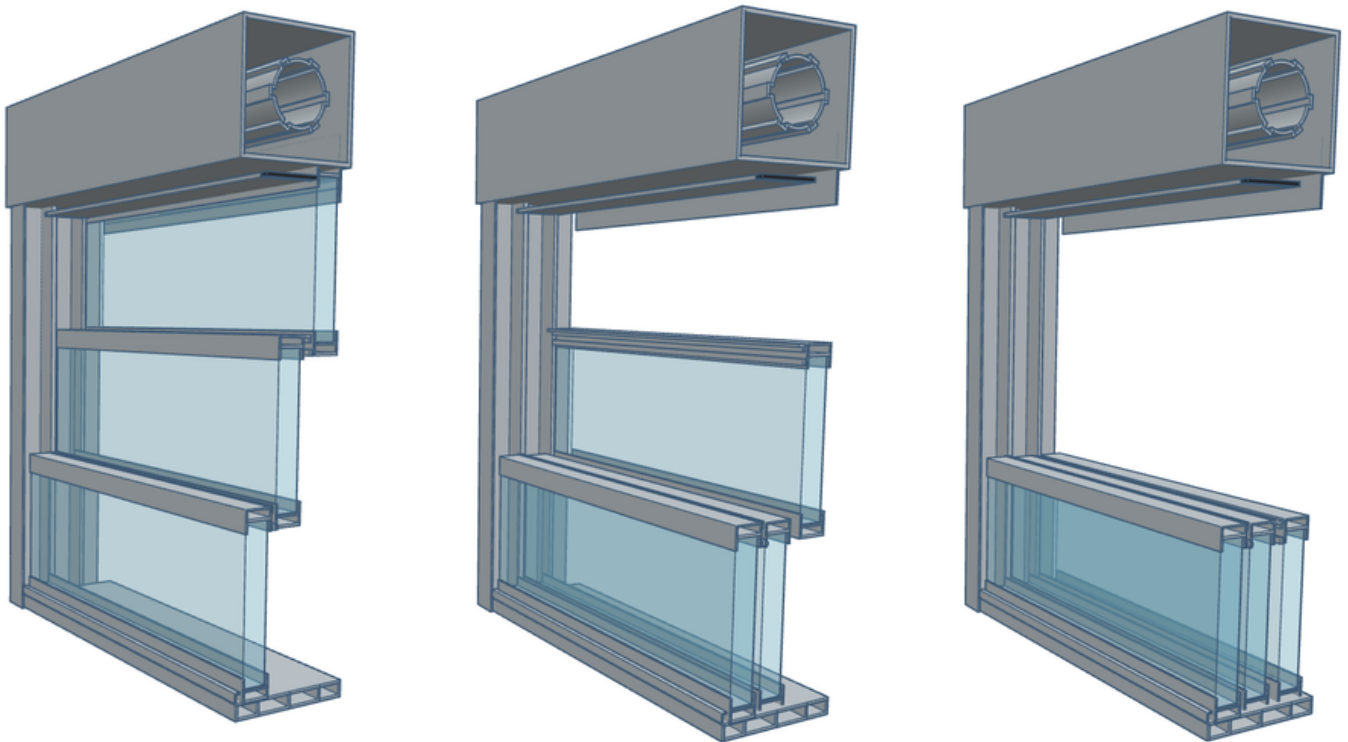


**sunExt**

# Folding



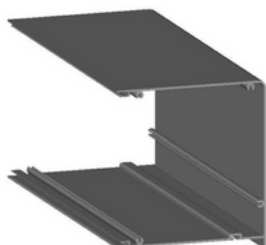
Experience ultimate control and flexibility with our tubular motor, allowing you to effortlessly adjust your guillotine to any position you desire.





# Extrusion Profiles

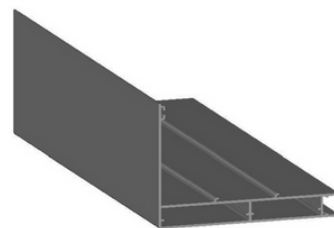
**PG001** - GUILLOTINE  
ENGINE DRAWER  
REF:37272



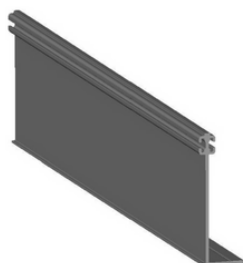
**PG002** - COVER FOR  
DRAWER FOR GUILLOTINE  
MOTOR REF:37271



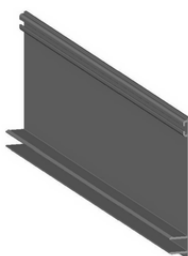
**PG003** - PERGOLA END  
PROFILE 190522-10



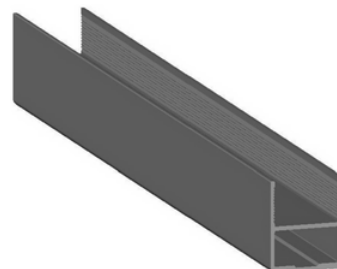
**PG004** - INTERIOR GUIDE  
FOR GUILLOTINE  
REF:37268



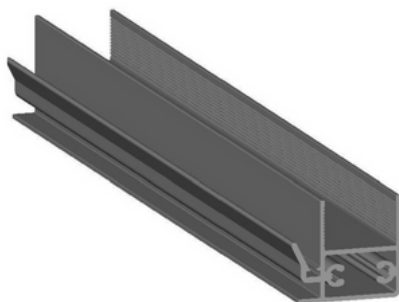
**PG005** - OUTER GUIDE  
FOR GUILLOTINE  
REF:37269



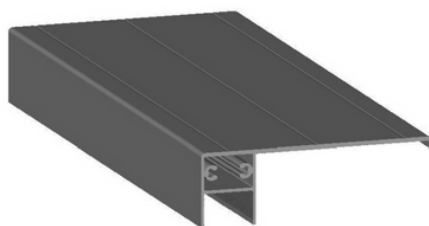
**PG006** - GUILLOTINE  
LOWER FRAME REF:37263



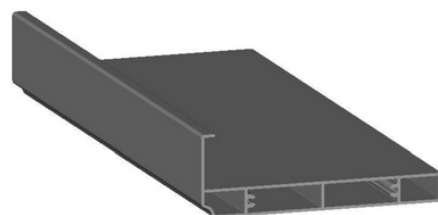
**PG007** - GUILLOTINE  
TRACTION FRAME  
REF:37264



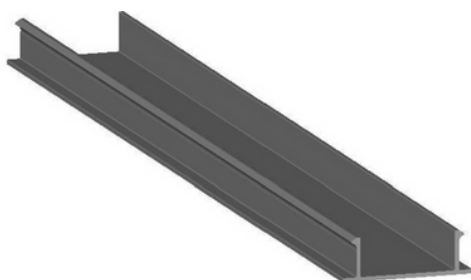
**PG008** - UPPER  
GUILLOTINE FRAME  
REF:37265



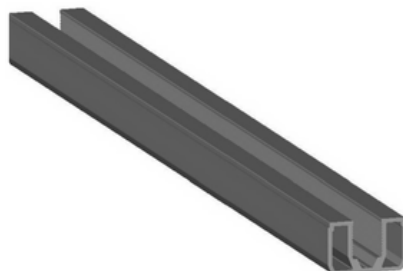
**PG009** - GUILLOTINE BASE  
PROFILE REF:37266



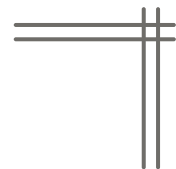
**PG010** - GUILLOTINE  
GUIDE COVER REF:37270



**PG011** - GUILLOTINE  
ENGINE PIPE  
REF:37115



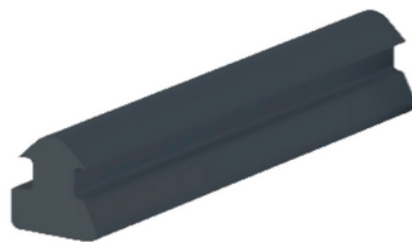
# Accessories



**PG016** - GUILLOTINE  
MANUFACTURING KIT



**PG013** - GUILLOTINE  
HANDLE RUBBER



**PG014** - GUILLOTINE BASE  
RUBBER



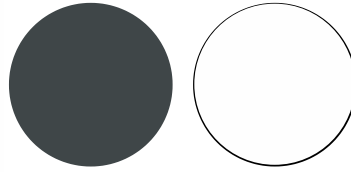
**AJ0009** - LINEAR ACTUATOR  
RIGID PISTON ROD 500N  
CAREER 200 FOR LATTICE



**PG018** - RUBBER FOR  
GUILLOTINE REF:GYT-10



# Range of colors available for structure



**GREY**  
7016 T

**WHITE**  
9016 T

\*Other colors available under consultation

