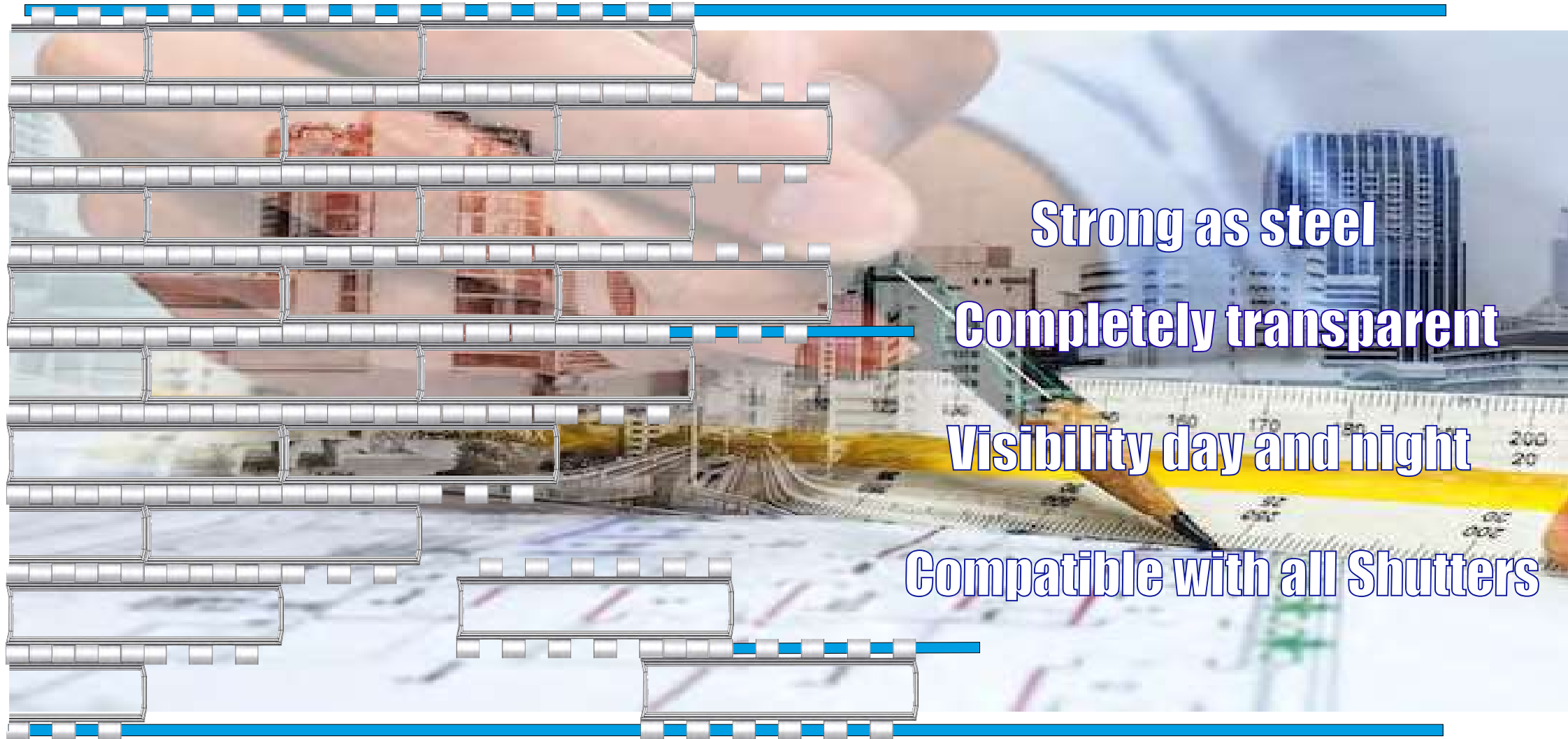


Transparent Security Shutters



Strong as steel

Completely transparent

Visibility day and night

Compatible with all Shutters

TRANSPARENT SECURITY SHUTTER



Transparent Security Shutter is designed to be more resistant against attack and to have a better look than the traditional shutters. It is created for many years of use and better appearance.

SPECIFICATIONS

- * Virtually unbreakable PCP units
- * Completely Transparent
- * 100% Protection against UV radiations
- * Ultra light - weight compared to steel shutters
- * Unbreakable and stainless
- * Fire retardant (Class M2)
- * Registered trade mark, model and patent
- * Complies with European security norms
- * 35 links to cover 1 m²
- * Weight 9,5 Kg/m²
- * Motorized Shutter with tubular or central motors

Residential Applications



Transparent Security Shutter also are used for residential applications ,villas, balcony, veranda and garage doors.

Commercial Uses



Transparent Security Shutters, are mostly used for shop windows, banks, bijouterie windows, doors and boutique.

Industrial Facilities



Transparent Security Shutters, are suitable for industrial applications for workplace factory they allows a large bright area.

TRANSPARENT SECURITY SHUTTER

Description of the product:

1-Transparence & Securityiatheisameitime:

Transparent Security Shutter Links have been designed in order to provide transparence where security is also a must. The main target in this design was to create a good complement to rolling shutters, in terms of a valid and functionally superior alternative to micro-perforated shutter slats.

The domain of application of this product, ranges from commercial shopwindows to industrial applications and even to domestic usage for people who do not like to be kept in darkness just to feel safer at home.

2-Impact resistance:

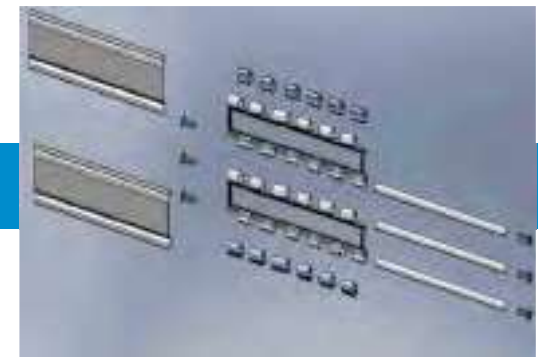
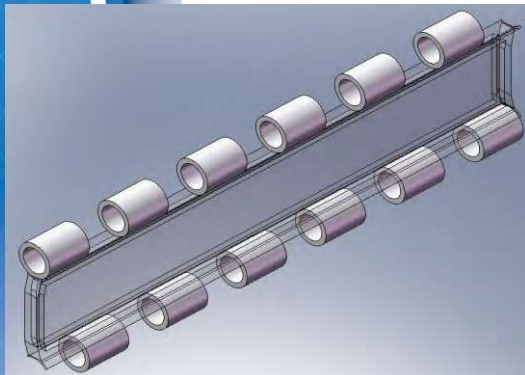
Being a security shutter, the product has to resist violent shocks coming from potential aggressors. In fact, tests made on this product have shown that it resists violent shocks better than traditional steel slats. The unique shape of the links has also proven to show superior resistance with respect to similar products coming from the competitors.

3-Protection:

In comparison with the micro-perforated steel shutters, or any other shutter in general, is the only defense against water, wind and dust. The material used is heat and cold resistant and UV stabilised, which means it will maintain its transparency in time and will keep your goods secure from discolouring or fading

Technical Specifications:

Transparent links are made of a Polycarbonate variant, specially studied for mechanical solidity and treated for UV stabilisation and filtering. The product is sold in form of "links" whose drawing can be seen below:



TRANSPARENT SECURITY SHUTTER

1-Aluminium tubes (not provided): Transparent Links are held together by using $\varnothing = 16$ mm aluminium tubes with 2 mm. thickness passing through their eyelets, thus forming a hinge system between two consecutive rows, in order to adapt to the rolling shutter's winding.

2-Hooks: Hooks are used for hanging the transparent shutter to top slats (usually metallic or plastic) and to add the bottom slat under the last transparent row. The same idea is used also when adding the transparent rows inside a traditional (metal or plastic) shutter.

Semcom Ltd. is providing a series of hooks, made of Polycarbonate or Aluminium with different shapes, to be able to adapt to different metal or plastic profiles available on the market.

3-Clips & Cups : They contain two major elements: the caps to be inserted on both edges of the aluminium tubes (to prevent the tubes from moving sidewise) and clips to be inserted on cut edges of the links, in order to reinforce them.



2) $\varnothing 16$ mm 2 mm sec. Aluminium tube



3) Hooks (5 different models)



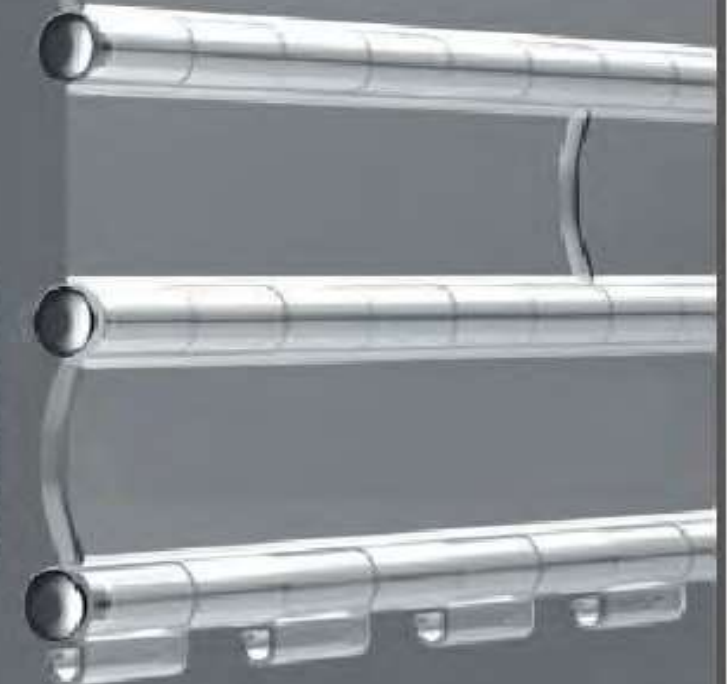
4 End Cups



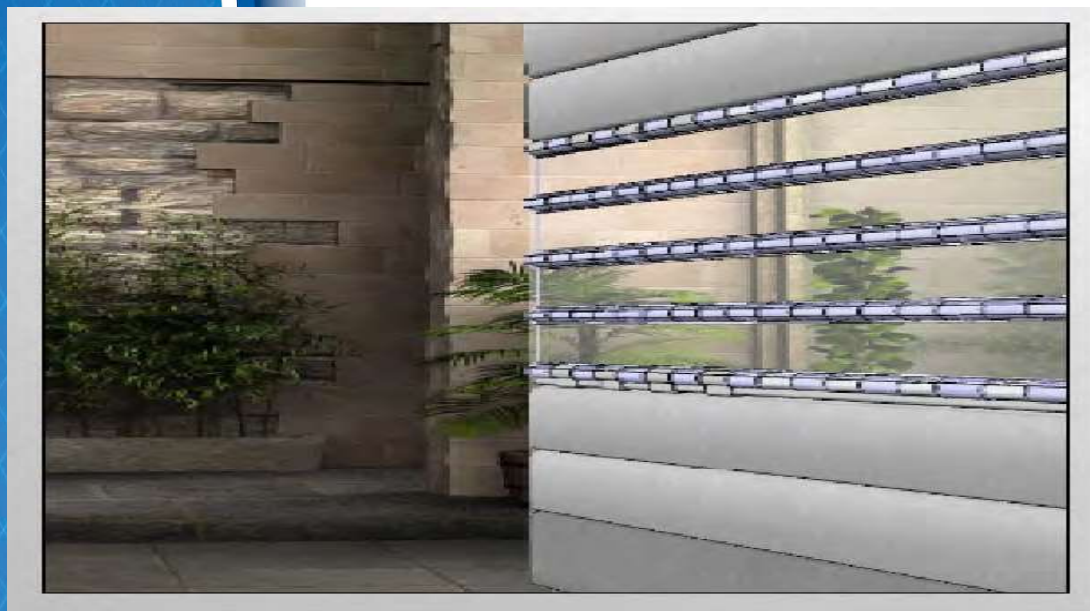
5 Edge Clips



1) Transparent Shutter link



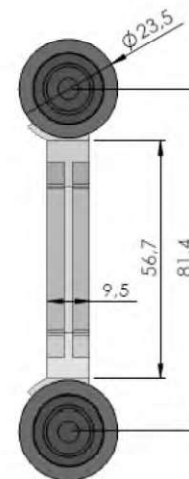
TRANSPARENT SECURITY SHUTTER



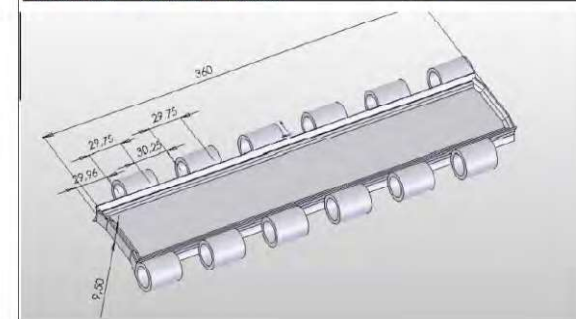
Easy look methode

Transparency as you wish,

You can make the transparency as your clients wish, you combine your aluminium slats or stell profile with the transparent links.



Weight/m2 (kg)	9,5
Number of Slats on 1 m2	35
Maximum Advised Width (mm)	6000
Maximum Advised Height (mm) (mm)	6000
Number of Profiles/Package	120



WINDING

Type Moteur	Turbulaire		Central
Height (cm)	Axe ϕ 89	Axe ϕ 102	Axe ϕ 220
180	26.7	28.0	35.0
220	28.5	29.6	35.5
260	30.4	31.7	36.7
300	32.5	32.5	39.1
340	33.1	33.5	39.6
380	34.2	35.0	41.2
400	36.7	35.7	42.0

The Transparent Security Shutter is electrically operated. It can be operated using single phase tube motor, central motor or side motor .with toggle , key switch or remote control .As the traditional shutters .

TRANSPARENT SECURITY SHUTTER



Packaging Information

One box 120 Links
One Pallet 21 Box
One pallet 2520 Links

2520 Links 72 m2 Shutter

Gross Weight 540 Kg



TRANSPARENT SECURITY SHUTTER

