

# Atlantic

## Awning Pergola

ENG

sunExt



# sunExt

**CREATE NEW SPACES,  
ENJOY NEW MOMENTS**

Cristales y Persianas López, S.L  
C/ Poniente, 62 Fuente del Maestro  
06360 (Badajoz) España  
cristalesypersinaslopez@cristalesypersianaslopez.com  
Tlf. (+34) 924 530 265 Web: [www.sunext.eu](http://www.sunext.eu)

# Index

Introduction	<b>01</b>
Water evacuation system	<b>02</b>
Assembly typologies- Simple	<b>03</b>
Assembly typologies- Double	<b>04</b>
Tecnical data & Maximum dimensions	<b>06</b>
Extrusion profiles	<b>07</b>
Accessories	<b>09</b>
Color range	<b>11</b>
Enclosure systems	<b>11</b>
Automated systems	<b>12</b>

# Introduction

sunExt Atlantic projects extensive shading and integrates perfectly into the structure of modern and cubist buildings. It is made up of an aluminum structure with a built-in awning.

The modern design in combination with the variety of colors we offer the possibility of different automatic systems (LED, rain, wind, snow sensors, etc.) make it ideal for use in outdoor and semi-outdoor spaces: houses, hotel facilities, restaurants and cafes.

The Pergola is designed to evacuate rainwater, the front pole of the awnings can be lowered between 20 and 40 cm, depending on the size - with motors if desired.

The finish of the profiles can be chosen between white, grey, ivory and black.



# Water evacuation system

The Pergola is designed to evacuate rainwater, the front pole of the awnings can be lowered between 20 and 40 cm, depending on the size - with motors if desired.

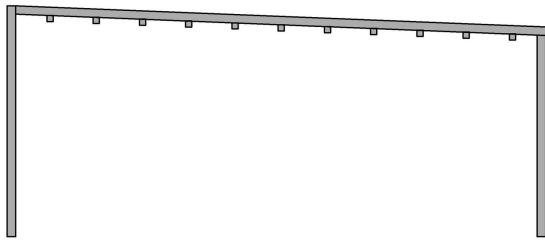
The finish of the profiles can be chosen between white, grey, ivory and black.



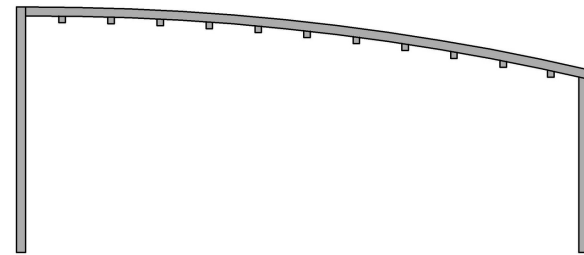
# Assembly typologies

## Simple

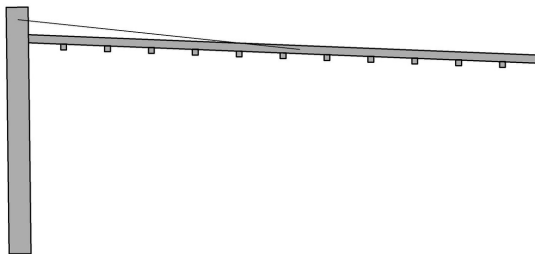
- Standard -



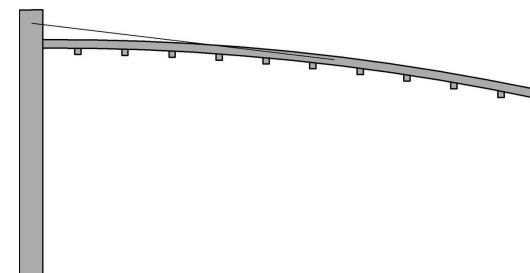
- Radian-



- Standard Hanging -



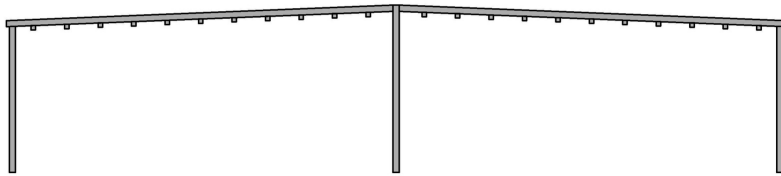
- Radian Hanging-



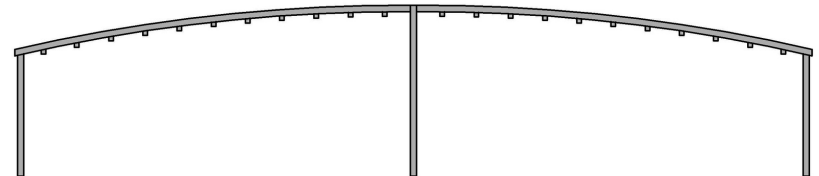
# Assembly typologies

## Double

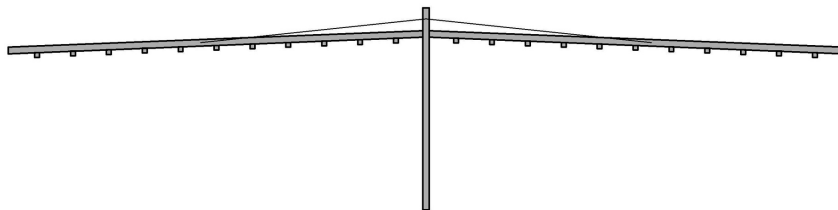
- Standard Gabled Roof-



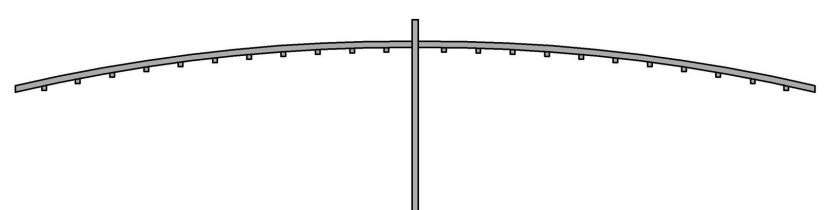
- Radian Gabled Roof -



- Standard Hanging Gabled Roof -



- Radian Hanging Gabled Roof -





sunExt Atlantic  
Awning Pergola



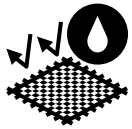
# Technical Data

Wind resistance UNE-EN 13659:2016



132 Pa  
49km/h

Water resistance UNE-EN 1873:2006



56l/sqm/h

Snow resistance



56kg/sqm/h

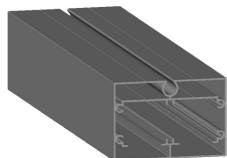
Max. Dimension



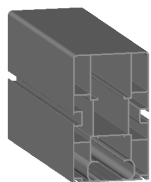
A: 3500 mm  
B: 7000 mm  
C: 3000 mm

# Extrusion Profiles

**PL001-** PALILLO DOBLE PERGOLA LONA  
REF:10001



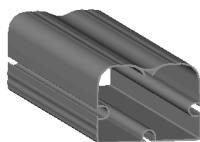
**PL004-** PERFIL RAIL PERGOLA LONA  
REF:2052



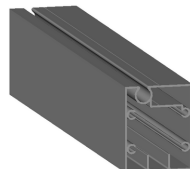
**PL007-** TAPA COLUMNA PERGOLA LONA  
REF:2302



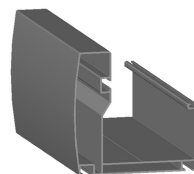
**PL010-** PALILLO GRANDE PERGOLA LONA  
REF:37216



**PL002-** PALILLO PERGOLA LONA REF:10002



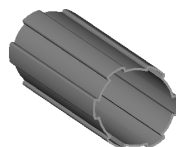
**PL005-** PERFIL CANALON PERGOLA LONA  
REF:2078



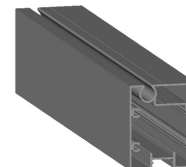
**PL008-** PERFIL TRAVESAÑO PERGOLA LONA  
REF:37025



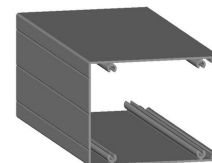
**PG312-** TUBO PARA MOTOR GUILLOTINA  
REF:5312



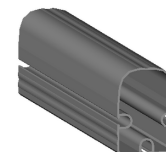
**PL003-** PALILLO PARA LED PERGOLA LONA  
REF:10003



**PL006-** PERFIL COLUMNA PERGOLA LONA  
REF:2301



**PL009-** PALILLO PEQUEÑO PERGOLA LONA  
REF:37153



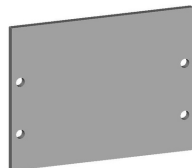
**PL141-** TAPA ALUMINIO PALILLO SIMPLE  
PERGOLA LONA



# Extrusion Profiles

**PL142-** TAPA ALUMIMIO PALILLO DOBLE PERGOLA  
LONA

---



**PL142-** TAPA ALUMIMIO PALILLO DOBLE PERGOLA LONA

---

**PL012-** PERFIL PERGOLA LONA REF: 2643

---

**PL013-** PERFIL PERGOLA LONA REF: 2642

---

**PL011-** PERFIL ADICIONAL CANALON PERGOLA LONA  
REF:2281

---



# Accessories

**PL111-** SOPORTE MOTOR PERGOLA LONA  
REF:PRG-18



**PL114-** CONEXION DE CANALON Y COLUMNA  
PERGOLA LONA REF:PRG-48



**PL117-** TAPA CANALON PERGOLA LONA  
REF:PRG-86



**PL120-** CORREA PARA PERGOLA LONA  
REF:PRG-105



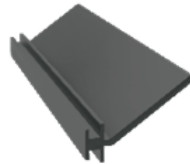
**PL112-** CONEXION RAIL/CANALON PERGOLA  
LONA REF:PRG-46



**PL115-** CUADRADILLO TENSOR INOX PERGOLA  
LONA REF:PRG-79



**PL118-** GOMA RAIL PERGOLA LONA REF:PRG-  
102



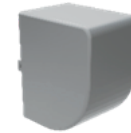
**PL125-** TAPA PALILLO PERGOLA LONA REF:PRG-  
19



**PL113-** CONEXION RAIL/TRANSVERSAL  
PERGOLA LONA REF:PRG-59



**PL116-** TAPA RAIL DELANTERA PERGOLA  
LONA REF:PRG-81



**PL119-** GOMA CANALON PERGOLA LONA  
REF:PRG-104



**PL126-** TAPA CENTRAL PALILLO PERGOLA  
LONA REF:PRG-20



# Accessories

**PL127-** TAPA PALILLO DOBLE PERGOLA LONA  
REF:PRG-21



**PL128-** TAPA CENTRAL PALILLO DOBLE  
PERGOLA LONA REF:PRG-22



**PL129-** CENTRALITA DD1410-H PERGOLA LONA



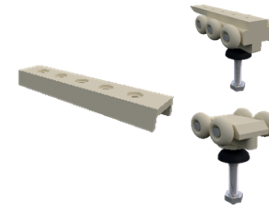
**PL132-** RUEDAS PERGOLA LONA REF:PRG-17



**PL133-** CONEXION DE SUELO Y COLUMNA  
PERGOLA LONA REF:PRG



**PL110-** SET CONEXION CORREA + RUEDAS  
PERGOLA LONA REF:PRG-15-16-17



**PL134-** SET PARA RAIL PERGOLA LONA REF:PRG 01/02/03/04/05/79/117/119



# Range of colors available for structure and awning

White 9016 T

Grey 7016 T

Grey 7046 T

White 9016

Grey 7016

Green 6002

Black 9005 T

Ivory 1015

Black 9005

Ivory 1015

Bordeaux 3004

\* Other colors available under consultation

## Enclosure systems

- Guillotine glass systems
- Sliding glass panels
- Folding glass panels
- Zip



Picture 1. Wind Protect Guillotine & Sliding Crystal



Picture 2. Zip Caribe




### **Automated systems**

- Complete roof .
- Triangular side profile.
- Horizontal column.
- LED lighting.
- LED lights.
- Rain and/or wind sensor.
- Infrared heating.
- Music and audio control system via Bluetooth.
- Smartphone control.

### **Motor**

- Tubular motor.
- Double axis motor.



sunExt

Feb'24