

sunExt

**ELEGANT
BIOCLIMATIC
PERGOLA**

ENG

CATALOG



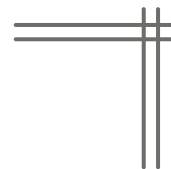


Elegant



**Meeting
place**

Index



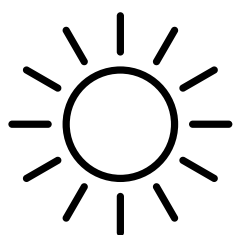
Introduction	01
Slats orientation	02
Water evacuation system	03
Technical data	04
Assembly typology & maximum dimensions	05
Extrusion Profiles	07
Accessories	09
Color range & Enclosure Systems	12
Automated system	13





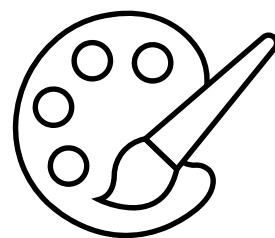
Introduction

EXPALUM Pergola is a water tight shading system with rotating louvers. It is made entirely from aluminium ensuring both durability and a sleek, modern appearance.



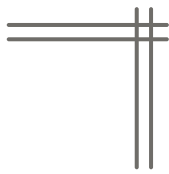
Protection, from sunlight during sunny days, as well as from rainwater or snow, is ensured with its special drainage system. The rotating louvers can be adjusted to provide ample shade, reducing heat and glare.

Modern, design in combination with the variety of colours that we provide, and the possibility of different automated systems addition (Led, rain, wind, snow sensors etc). This customization allows you to create a personalized outdoor space that is both stylish and practical.

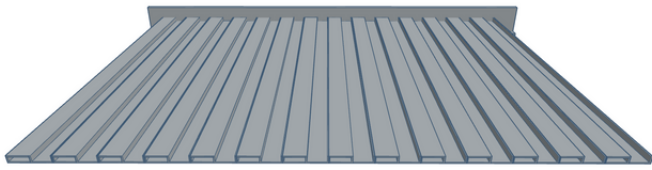


Adaptability, of our Pergola make it ideal for use in outdoor and semi-outdoor spaces in houses, hotel facilities, restaurants, and cafes. This versatility allows it to enhance various environments by providing a comfortable and stylish area for relaxation and entertainment, regardless of the weather.

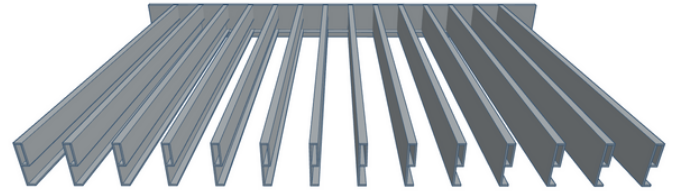




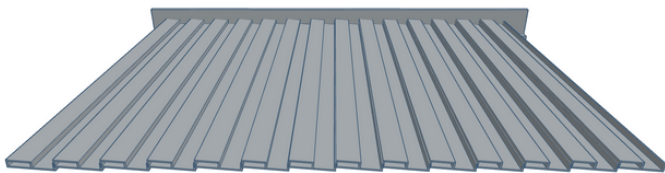
Slats orientation



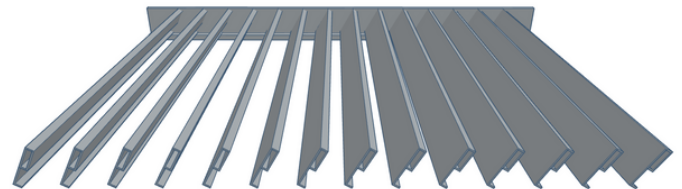
The roof remains closed, offering protection from all weather.



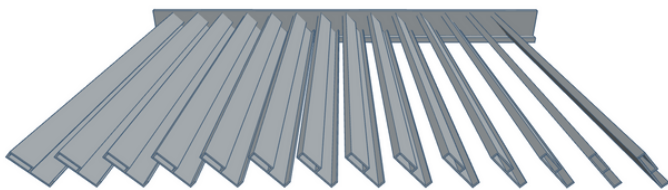
Allows full use of the sunlight.



Allows the ventilation of the area even if it is raining or snowing.



Maximum louver's opening, that allows maximum use of sunlight even in sunset.



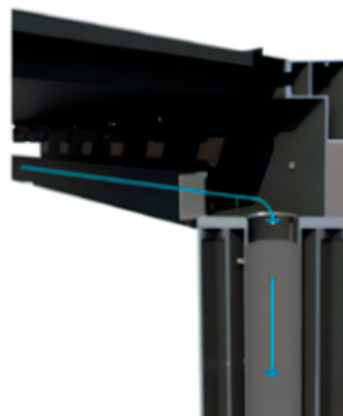
Allows the sunlight to enter, controlling though the illumination.



Water evacuation system

The Pergola is designed to collect rainwater and channel it towards the side profiles of the grid.

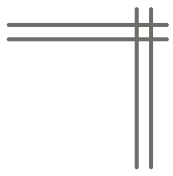
Then the rainwater through the column is guided out of the construction.



The profile of the slat is studied to keep the raindrops that accumulate and do not fall when the slats start to move.

The finish of the profiles can be chosen between anodized, RAL color or imitation wood.





Technical data

Water Resistance

UNE-EN 1873:2006
120l/sqm/h



Wind resistance

UNE-EN 12211:2017
600 Pa 224 km/h



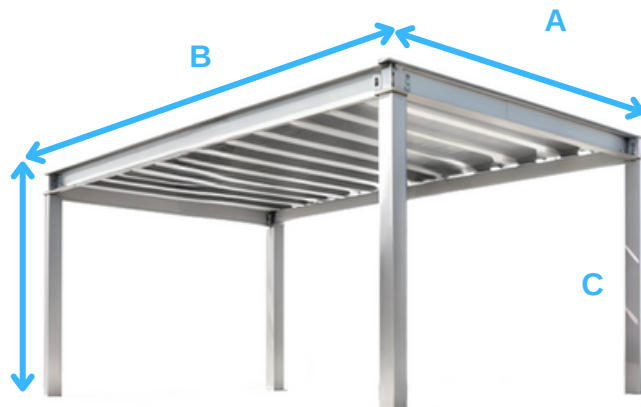
Snow resistance

120 kg/sqm/h



Maximum dimensions

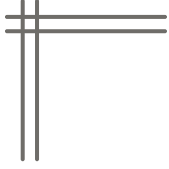
A: 4500 mm	Or	A: 4000 mm	Or*	A: 4000 mm
B: 5500 mm		B: 6000 mm		B: 7000 mm
C: 3000 mm		C: 3000 mm		C: 3000 mm



*Adding intermediate profiles PF020 & PF21

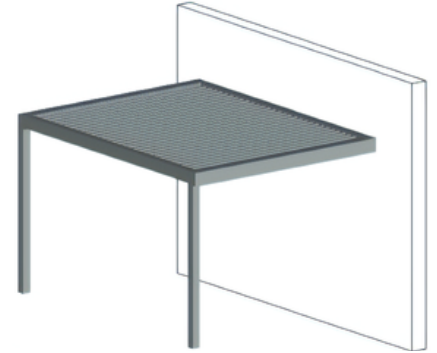


SunExt



Assembly typology & maximum dimensions

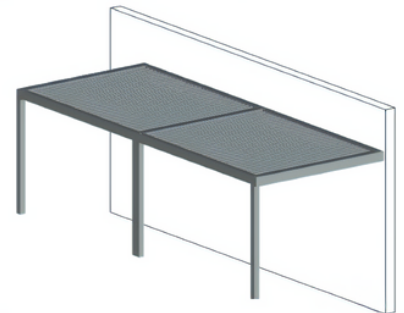
2 columns
perpendicular
to the wall



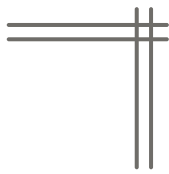
3 columns



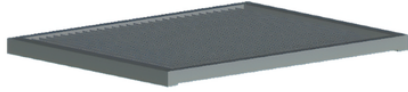
3 columns
perpendicular
to the wall



sunExt



Assembly typology & maximum dimensions

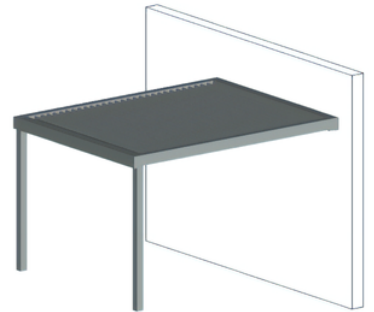


0 columns

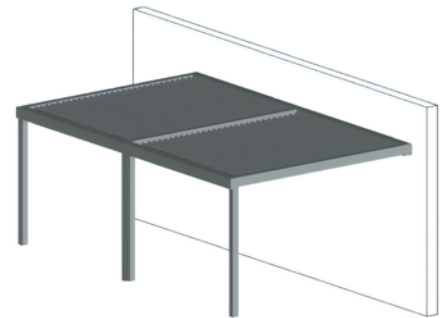


4 columns

2 columns
parrarel to
the wall

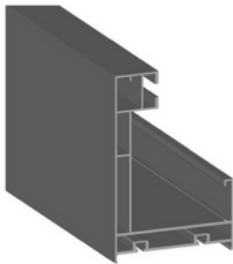


3 columns
parrarel to
the wall



Extrusion Profiles

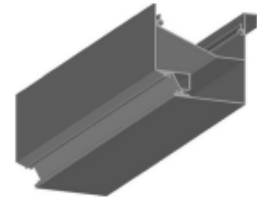
PF027 - PERGOLA
BEAM PROFILE 2694
MT



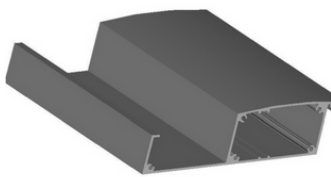
PF028 - COVER FOR
PERGOLA BEAM 2702 MT



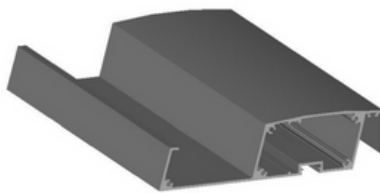
PF029 - PERGOLA
PROFILE FOR LED 2692
MT



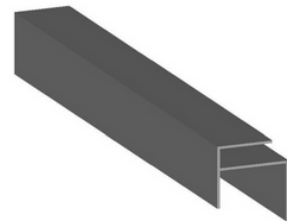
PF030 - PERGOLA SLAT
PROFILE 190522-9 MT



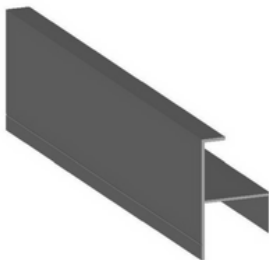
PF007 - LAMA PROFILE
FOR LED PERGOLA
190522-9



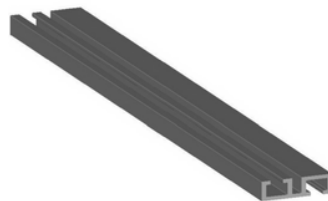
PF024 - PERGOLA
BEGINNING PROFILE
190522-24 NU



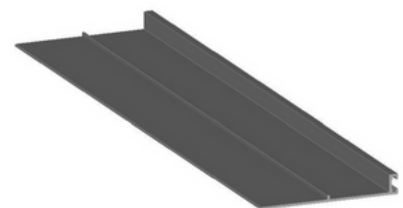
PF002 - PERGOLA FINAL
PROFILE 190522-10



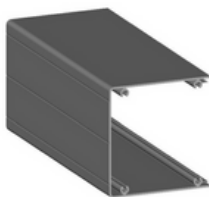
PF012 - PERGOLA MOTOR
PROFILE 190522-5



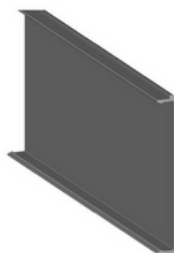
PF011 - UPPER PROFILE
PERGOLA LIGHT
COVER 190522-4

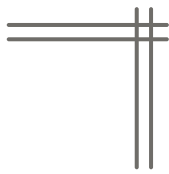


PC005 - COLUMN
PROFILE REF:2009



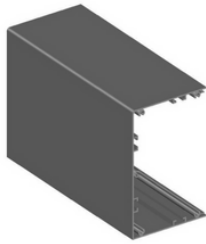
PC006 - COLUMN
PROFILE PLATE
REF:2010



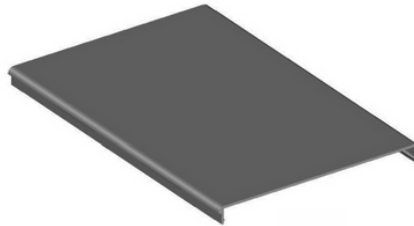


Extrusion Profiles

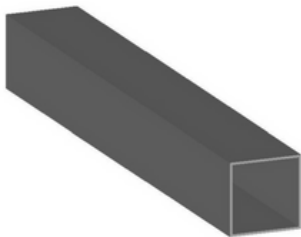
PF037 - DOUBLE PERGOLA
COLUMN
PROFILE REF:10005



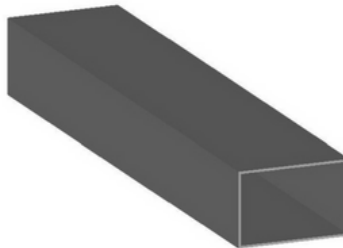
PF038 - DOUBLE PERGOLA
COLUMN COVER
REF:10007



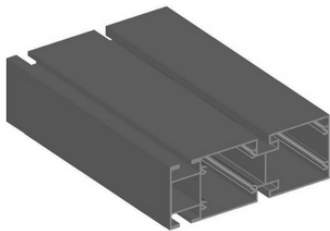
PF023 - ALUMINIUM TUBE 40 X
40 X 1.3



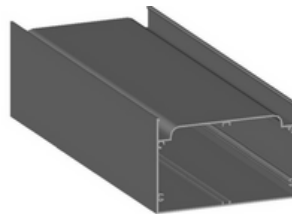
PF026 - ALUMINIUM
TUBE 60 X 40 X 1.3



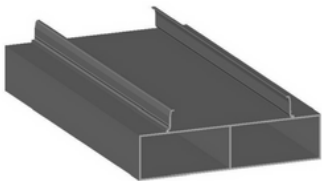
PF039 - DOUBLE BEAM
BIOCLIMATIC PERGOLA
REF:10015



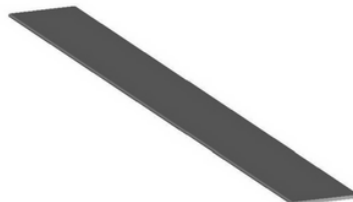
PF020 - CENTRAL LOWER
PERGOLA PROFILE
20200513-6



PF021 - CENTRAL UPPER
PERGOLA PROFILE REF
20200513-3

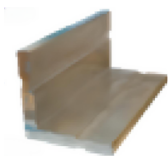


PF010 - PLATE PROFILE
30MM PERGOLA
190522-3

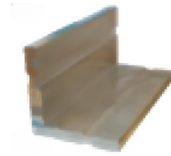


Accessories

PA019 - BEAM
CONNECTION ANGLE
83MM



PA020 - BEAM
CONNECTION ANGLE
44MM



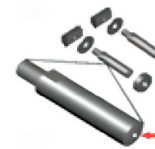
PA148 - ALLEN SCREW
CONNECTION
ANGLE 7380-2 A-2 5 X12



PA005 - PAIR OF
ACCESSORIES FOR
THE MOVEMENT OF THE
SLAT (B)



PA011 - PAIR OF
ACCESSORIES FOR THE
MOVEMENT OF THE SLAT
(A)



PA003 - PLASTIC PLUG
FOR LAMA
200-720



PA082 - BLADE ROTATION
PLASTIC PLUG



PA041 - ALUMINUM
COVER FOR
PERGOLA SLATS
SD0514-20 NEW



PA092 - SCREW FOR
PERGOLA SLATE
COVER A2 4.2 X 16



PA006 - HEXAGONAL
SCREW M6 X25 INOX
PERGOLA SD0514-14



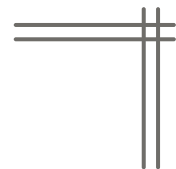
PA008 - HEXAGONAL
NUT FOR M6
STAINLESS PERGOLA
BOLT SD0514-18



PA009 - WASHER FOR
M6 X 25
SCREW



Accessories



PA151 - SUNEXT
PERGOLA MOTOR
FIXING KIT



PC015 - BICHROMATED
STEEL PART 2 FOR
GUTTER CONNECTION
REF:124138



PA149 - COLUMN AND
BEAM CONNECTION
MT 5MM



PA193 - SINGLE COLUMN
AND BEAM
CONNECTION



PA182 - COLUMN AND
CENTRAL BEAM
CONNECTION (2 modules)



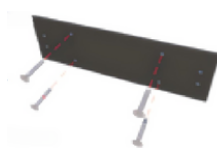
PA144 - JOINT FOR
BEAM COLUMN
CONNECTION



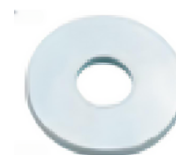
PA113 - BRICOMATTED
FORGED FIXING SET
REF:099252



PA028 - SUPPORT BASE
FOR PERGOLA
CENTRAL PROFILE
190522-16



PA136 - WASHER 9021
M6



PA131 - PERGOLA BEAM
CORNER TRIMMER
REF:102667



PA180 - LED PROFILE
ANGLE COVER
REF:112123

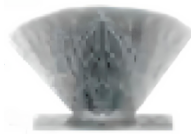


Accessories

PA014 - PERGOLA
SEALING RUBBER



PG015 - DOORMAT 6.7 X
10 GUILLOTINE
REF:GYT-13



PA132 - POREXPAN
FOR PERGOLA SLATS
2
METERS REF:XV5890



PA181 - STAINLESS STEEL
TRIM FOR PERGOLA
DRAIN



PC018 - PVC TUBE 50MM



PC019 - PVC ELBOW 90°
50MM



PA161 - KIT DE SILICONA
PARA SELLADO
PERGOLAS



PA192 - SILICONE
SPRAY



PA143 - ALLEN SCREW M6
X 20 STAINLESS
STEEL CONNECTION 2
PERGOLA

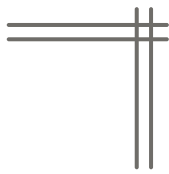


PA128 - RED LIGHT
HEATER IR-S15 1500 W

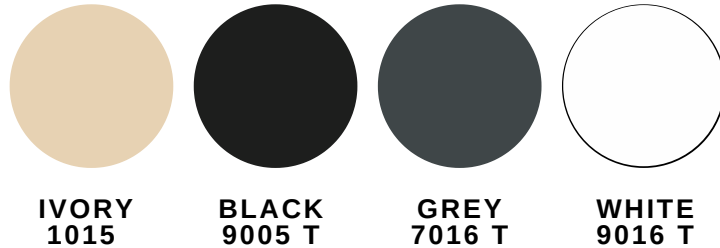


PA129 - LIGHT HEATER 50%
IR-M15 1500 W





Range of colors available for structure and louvers



*Other colors
available under
consultation

Enclosure systems

- Guillotine glass systems
- Folding glass panels
- Sliding glass panels
- Zip

Picture 1. Wind Protect
Guillotine & Sliding Crystal



Picture 2. Zip Caribe





Automated system

- Spotlight led perimeter
- Spotlight led slats
- Perimeter led lightning
- Slats led lightning
- Rain sensor
- Wind sensor
- Infrared heating
- Music set
- Smartphone control
- Additional power outlet

Engine

- Piston engine

