

**sunExt**

**SPACE  
BIO-PERGOLA**

**ENG**

**CATALOG**





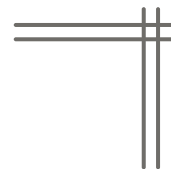
**Comfort**

**Versatile**



**Flexible  
shading**

# Index

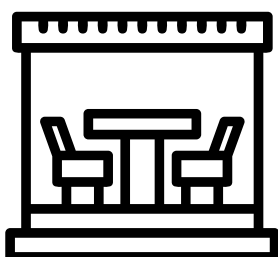


|  |    |
|--|----|
| Introduction                           | 01 |
| Slats orientation                      | 02 |
| Water evacuation system                | 03 |
| Technical data                         | 04 |
| Assembly typology & maximum dimensions | 05 |
| Extrusion Profiles                     | 07 |
| Accessories                            | 08 |
| Color range & Enclosure Systems        | 11 |
| Automated system                       | 12 |



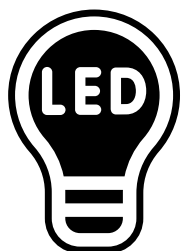
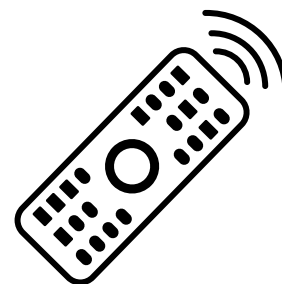
# Introduction

**EXPALUM** SunExt Space is made up of rotating aluminum slats that create warm spaces protected from adverse outdoor conditions.



**Versatile Spaces**, It is ideal for patios, terraces, gardens, and balconies, seamlessly blending with any outdoor setting. This flexibility makes it a perfect addition to various environments, enhancing the usability of your outdoor areas.

**Remote-Controlled Flexibility**, Unlike other pergolas, this system allows the user to retract the slats using a remote control, providing the option to enjoy the sun and a broader view of the outside. This convenient feature offers effortless control, allowing you to adjust the ambiance with just a click.

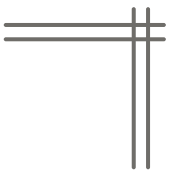


**Enhanced Night Use**, It also offers a wide variety of accessories, such as LED lighting in the slats or around the perimeter, making it possible to use the terrace at night. These lighting options not only extend the usability of your space but also create a warm and inviting atmosphere after dark.

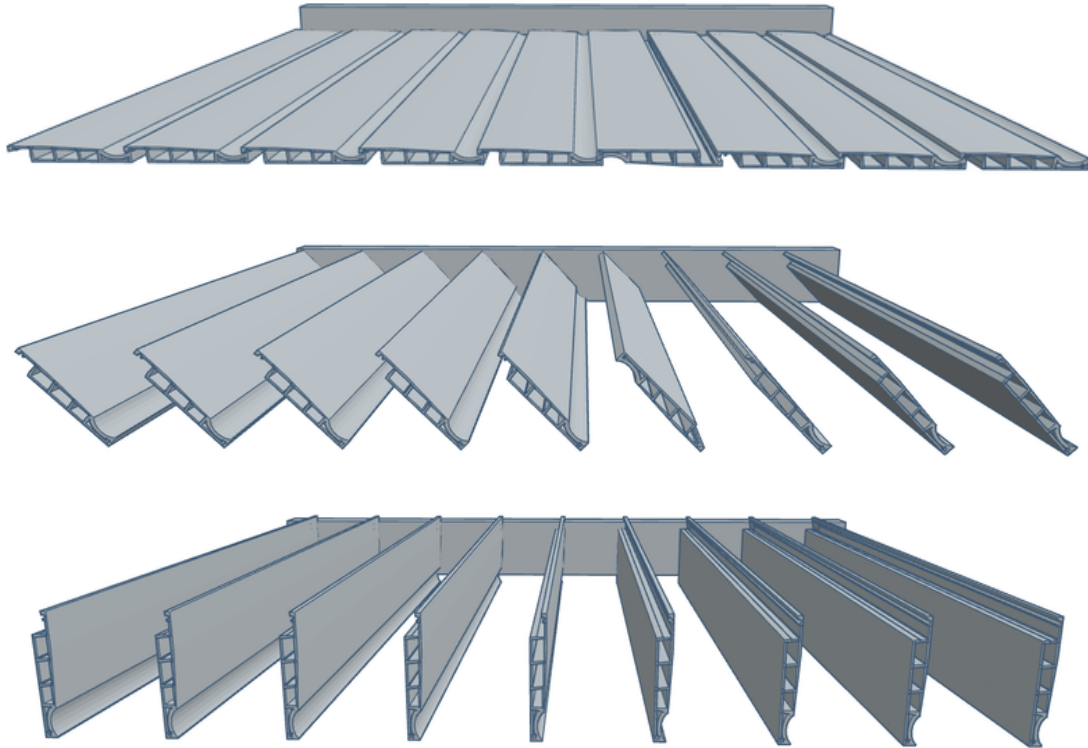
sunExt



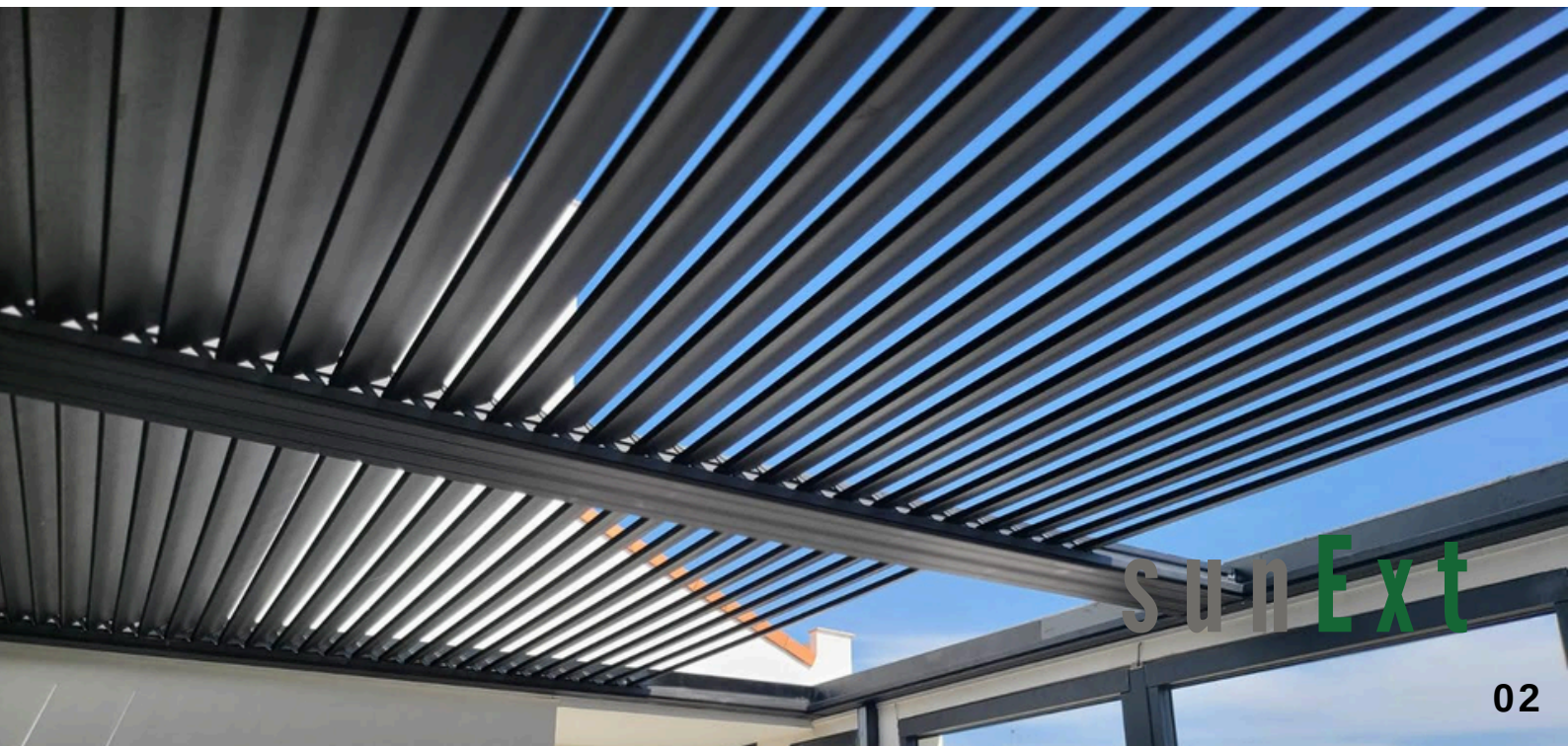
# Slats orientation



90° is maximum louver's opening, that allows full use of the sunlight



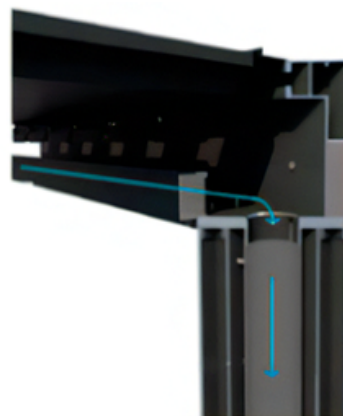
\*Maximum opening roof is 5750 mm for a total length of 7000 mm. Around a 83% of the roof can be open.



# Water evacuation system

The Pergola is designed to collect rainwater and channel it towards the side profiles of the grid.

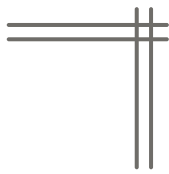
Then the rainwater through the column is guided out of the construction.



The profile of the slat is studied to keep the raindrops that accumulate and do not fall when the slats start to move.

The finish of the profiles can be chosen between anodized, RAL color or imitation wood.





# Technical data

## Water Resistance

UNE-EN 1873:2006  
150l/sqm/h



## Wind resistance

UNE-EN 13659:2016  
600 Pa 224 km/h



## Snow resistance

100 kg/sqm/h

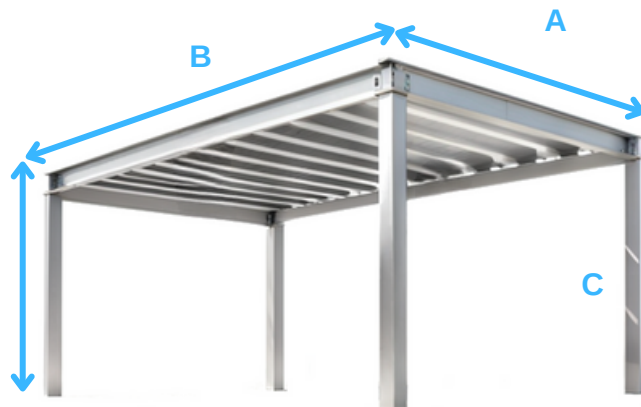


## Maximum dimensions

A: 4000 mm

B: 7000 mm

C: 3000 mm



# Assembly typology & maximum dimensions

4 columns



2 columns  
parallel to  
the wall



0 columns

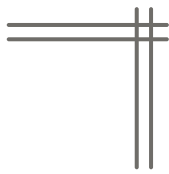


\*Anchor to a solid body is required where there is no colum.



sunExt





# Assembly typology & maximum dimensions



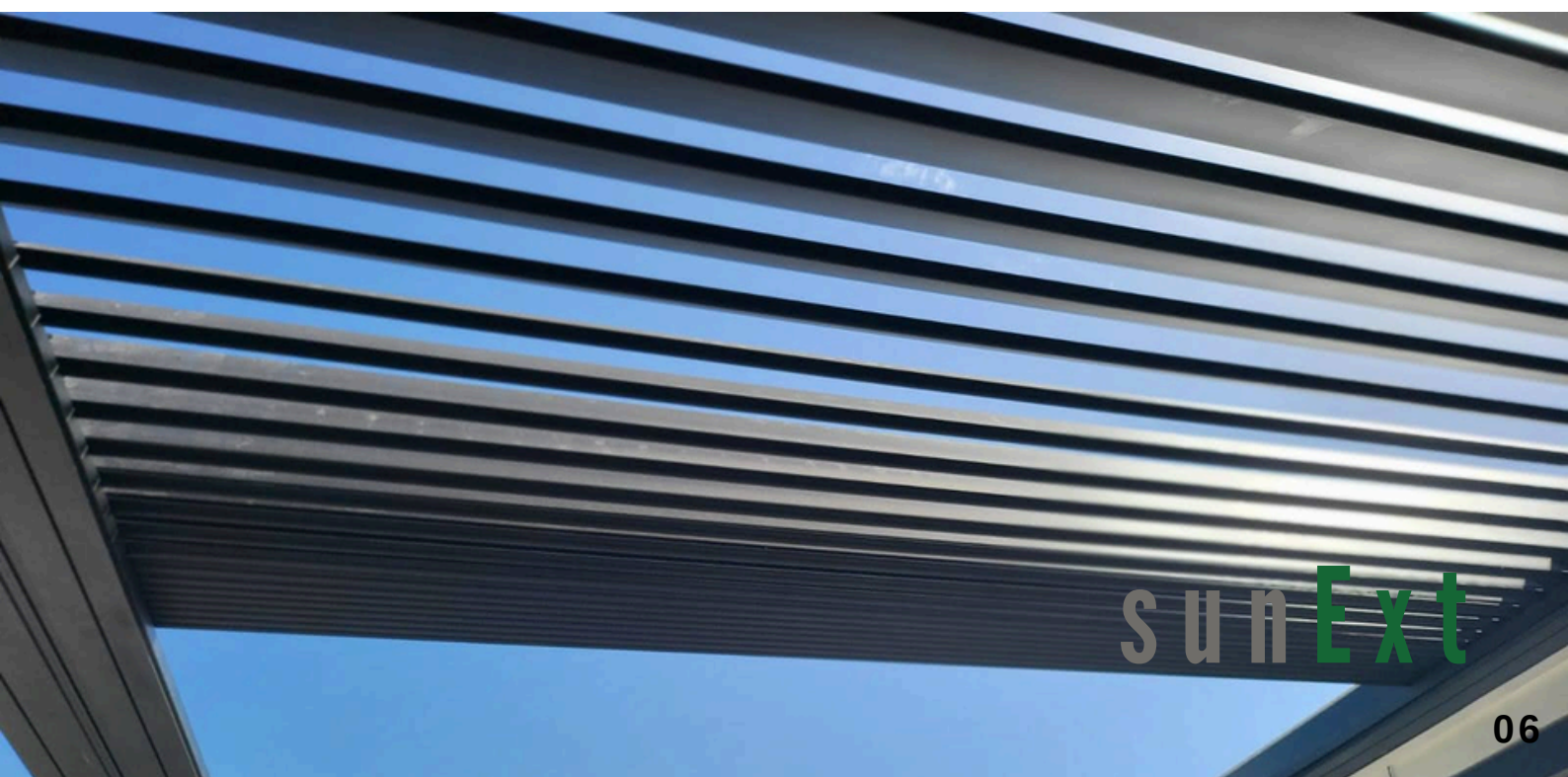
3 columns



2 columns  
perpendicular  
to the wall

Duplex modules are not available for bio-pergola, so linking several modules will be necessary for bigger dimensions.

\*Anchor to a solid body is required where there is no colum.

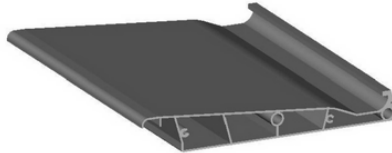


# Extrusion Profiles

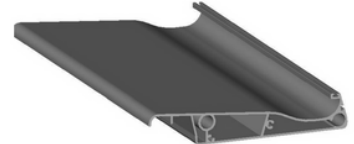
**PF102** - SIDE GUTTER  
RETRACTABLE  
PERGOLA REF:2088



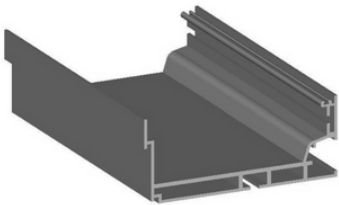
**PF109** - RETRACTABLE  
PERGOLA SLATE REF:2096



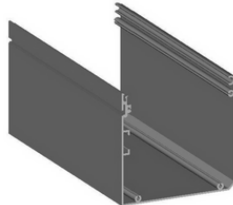
**PF113** - RETRACTABLE  
PERGOLA HALF SLAT  
REF:10016



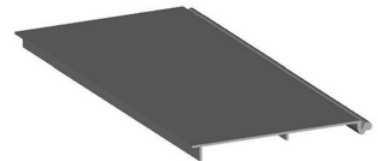
**PF103** - RETRACTABLE  
PERGOLA BASE GUTTER  
REF:2089



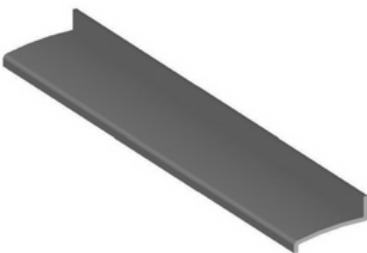
**PF104** - RETRACTABLE  
PERGOLA MOTOR  
DRAWER REF:2090



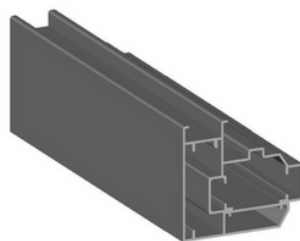
**PF105** - RETRACTABLE  
PERGOLA MOTOR  
DRAWER COVER REF:2091



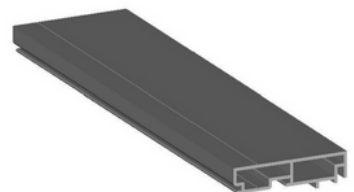
**PF106** - RETRACTABLE  
PERGOLA BEGINNING  
PROFILE REF:2092



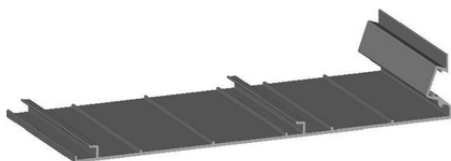
**PF107** - RETRACTABLE  
PERGOLA RAIL PROFILE  
REF:2279



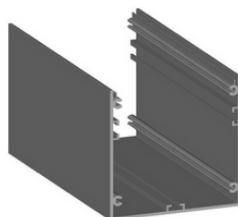
**PF108** - RETRACTABLE  
PERGOLA RAIL PROFILE  
COVER REF:2280



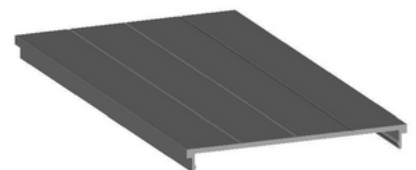
**PF112** - GUTTER  
COVER REF:23364



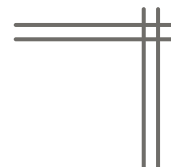
**PF114** - RETRACTABLE  
PERGOLA COLUMN  
PROFILE WITH COVER  
REF:10041 "NU"



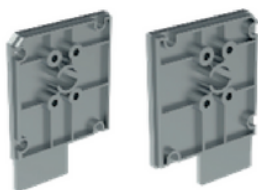
**PF115** - RETRACTABLE  
PERGOLA COLUMN  
COVER WITH COVER  
REF:10042 "NU"



# Accessories



**PA201** - RETRACTABLE  
PERGOLA DRAWER END  
SET REF: B20001-002



**PA202** - COVER SET  
FOR RETRACTABLE  
BLADE REF: B20003-004



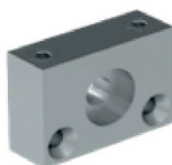
**PA203** - RETRACTABLE  
PERGOLA SIDE  
SCISSOR SET  
REF: B20005-006



**PA204** - INTERIOR SQUARE  
RETRACTABLE BEAM  
REF: B20-007



**PA210** - RETRACTABLE  
PERGOLA BEARING  
HOUSING REF: B20-013



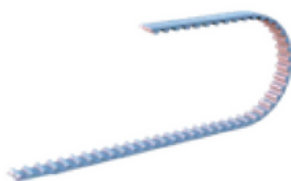
**PA253** - EMBELLECEDOR  
ESQUINA VIGA PERGOLA  
RETRACTIL REF: 112117



**PA211** - CAPSULE 70MM  
RETRACTABLE PERGOLA  
REF: B20-014



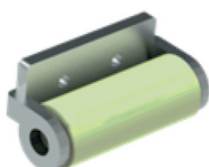
**PA208** - RETRACTABLE  
PERGOLA TOOTH CHAIN  
REF: B20-011



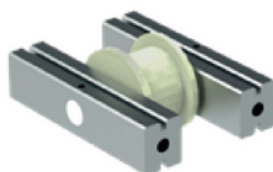
**PA209** - RETRACTABLE  
PERGOLA BEARING  
REF: B20-012



**PA215** - PUSH BELT  
RETRACTABLE PERGOLA  
REF: B20-018



**PA216** - RETRACTABLE  
PERGOLA BELT  
TENSIONER REF: B20-019



**PA217** - STUD 10 X 115 MM  
WITH RETRACTABLE  
PERGOLA WHEEL  
REF: B20-020



# Accessories

**PA218** - STUD 12 X 55 MM  
WITH RETRACTABLE  
PERGOLA WHEEL  
REF:B20-021



**PA219** - RETRACTABLE  
PERGOLA SLATER FRONT  
BOLT REF:B20-022



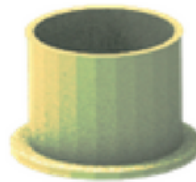
**PA220** - CENTRAL BOLT  
RETRACTABLE PERGOLA  
SLATE REF:B20-023



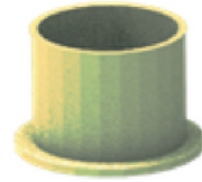
**PA221** - MEDIUM LONG  
BUSHING RETRACTABLE  
PERGOLA SLATS REF:B20-024



**PA224** - SHORT CAP 12  
RETRACTABLE PERGOLA  
SLATED COVER REF:B20-027



**PA225** - RETRACTABLE  
PERGOLA SCISSOR LONG  
BUSH REF:B20-028



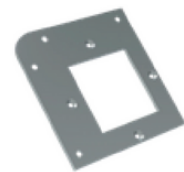
**PA227** - RETRACTABLE  
PERGOLA PLASTIC RAIL  
REF:B20-030



**PA250** - RETRACTABLE  
STAINLESS STEEL  
PERGOLA NUT



**PA251** - COLUMN  
CONNECTION BEAM  
RETRACTABLE BLIND  
PERGOLA



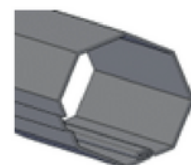
**PA252** - CENTRAL  
CONNECTION OF COLUMN  
BEAM RETRACTABLE  
BLIND PERGOLA



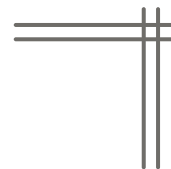
**PA231** - CENTRAL  
CONNECTION COLUMN  
BEAM RETRACTABLE  
PERGOLA REF:B20-034



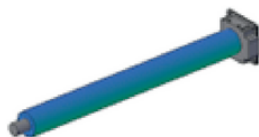
**AE0015** - EJE DE 70 x  
1,5 OCTOGONAL



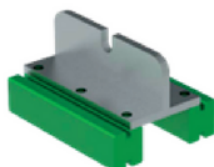
# Accessories



**MM0057** - GLB MOTOR  
DM59S-120/9 59mm 120  
Nm + ADAPT. OCT AXIS 70



**PA213** - RETRACTABLE  
PERGOLA STRAP  
HANDLE REF:B20-016



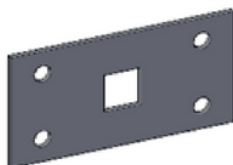
**PA214** - RETRACTABLE  
PERGOLA SLATE  
FIXING REF:B20-017



**PA230** - RETRACTABLE  
PERGOLA FLOOR COLUMN  
CONNECTION REF:B20-033

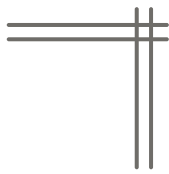


**PA248** - PLATE FOR  
MOTOR FIXING  
RETRACTABLE PERGOLA

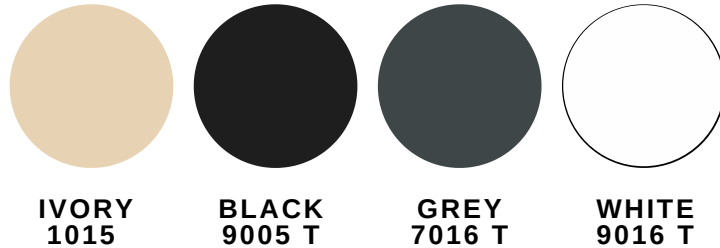


**PA249** - UPPER SQUARE SET  
RETRACTABLE PERGOLA  
GUTTER FIXING REF 119247-  
119248





# Range of colors available for structure and louvers



\*Other colors  
available under  
consultation

## Lateral closing systems

- Guillotine glass systems
- Folding glass panels
- Sliding glass panels
- Zip

Picture 1. Wind Protect  
Guillotine & Sliding Crystal



Picture 2. Zip Caribe





## Automated system

- Spotlight led perimeter
- Perimeter led lightning
- Rain sensor
- Wind sensor
- Infrared heating
- Music set
- Smartphone control
- Additional power outlet

## Motor

- Tubular motor

